



# Mobile Classroom School Visit Requirements

Thank you for your interest in Seed Survivor!

Please review the following requirements carefully prior to submitting your booking

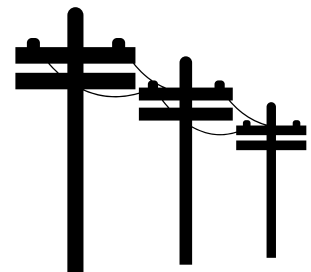
## Trailer Specifications

- 1 In order to set-up the trailer on time, please schedule a staff member to meet and guide the Seed Survivor trailer driver 1.5 hours before the start time.



- 2 Outdoor space: 60x30 foot space. If necessary, after the trailer is set-up the truck can be parked elsewhere. The trailer needs a 40x30 foot space.

- 3 No overhanging power lines.



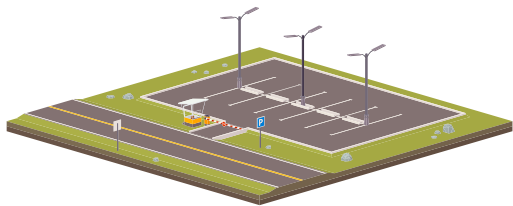


4

Safe from traffic. Students must be able to access the trailer without traffic risk.

5

Relatively easy access to and from the parking location (our drivers are great but they are towing a 40 foot trailer so the less maneuvering the better).

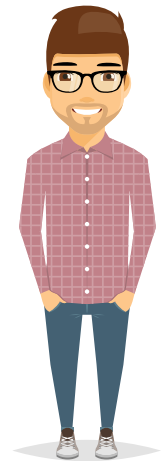


6

Horizontally level parking surface. (If the parking area slopes to a drain or is on a hill the driver may not be able to level the trailer).

7

At least one representative (teacher/parent/community volunteer designated by the school) will be available at all times to supervise and facilitate the inside presentation. Note, this representative is in addition to the classroom teacher, who is also expected to stay for the entire presentation.



8

Approximately four to six students per class will be able to play virtual reality inside the trailer. Submitting this request indicates that the teachers involved understand and are willing to select students to participate.