



Mobile Classroom School Visit Requirements

Thank you for your interest in Seed Survivor!

Please review the following requirements carefully prior to submitting your booking

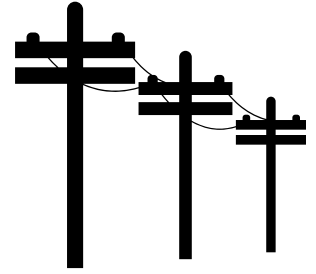
Trailer Specifications

- 1 In order to set-up the trailer on time, please schedule a staff member to meet and guide the Seed Survivor trailer driver 1.5 hours before the start time.



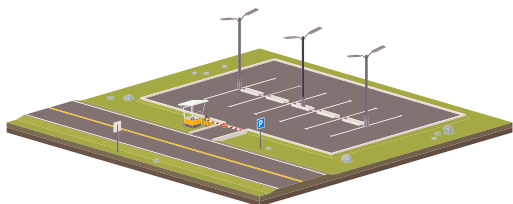
- 2 Outdoor space: 60x30 foot space. If necessary, after the trailer is set-up the truck can be parked elsewhere. The trailer needs a 40x30 foot space.

3 No overhanging power lines.



4 Safe from traffic. Students must be able to access the trailer without traffic risk.

5 Relatively easy access to and from the parking location (our drivers are great but they are towing a 40 foot trailer so the less maneuvering the better).



6 Horizontally level parking surface. (If the parking area slopes to a drain or is on a hill the driver may not be able to level the trailer).